

(SVHC)

15

LED

SGS

GZP24-033548

2024 10 16

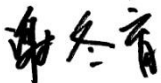
2024 10 16 ~ 2024 10 23

(i) (2024 6 27 REACH) 241
(SVHC)

(i) (2024 8 30 REACH) 6 (SVHC)

(ii) 2 (SVHC)

(iii) (1907/2006 REACH)
REAC/F2 9.96 T1 0 0 1 394.27 467. TETEMC /P A MCID 96 BDC 486.77 40C



Dongyu Xie

scan to see the report



4F55D5AA



CANEC24022805502

2024 10 23

2 14

(SVHC)

| | |
|------------------|--|
| REACH 14 SVHC | |
|------------------|--|

(SVHC)

1.

<http://echa.europa.eu/web/guest/candidate-list-table>

2. REACH

2.1

1907/2006 EC 33 57 59
0.1%

1907/2006 EC 57
59 (a) 1 / / 7 4 (b)
0.1%

2021 SVHC 1 5 0.1% w/w
SCIP 2008/98/EC ECHA

2.2

SVHC

31 1907/2006 REACH

2.3

0.1% (w/w) / 1272/2008 CLP
1907/2006 REACH

(SDS)

- 1272/2008 CLP
- 1272/2008 CLP
1272/2008 CLP ;
- 1272/2008 CLP

(a) (w/w)

(b) PBT vPvB (w/w)

(c)

(w/w)

(d)

3. SVHC

SVHC

SVHC



CANEC24022805502

2024 10 23

4 14

(SVHC)

| ID | | ID | SGS ID |
|-----|--------|----|-------------------------|
| 001 | " LED" | A1 | CAN24-0228055-0001.C001 |

SGS

ICP-OES UV-VIS GC-MS HPLC-DAD/MS

(SVHC)

SVHC

| | | CAS No. | 001 (%) | RL (%) |
|---|------|---------|---------|--------|
| - | SVHC | - | ND | - |

SVHC

| | | CAS No. | 001 (%) | RL (%) |
|---|------|---------|---------|--------|
| / | SVHC | - | ND | - |

- (1) SVHC RL SVHC SVHC
- (2) RL = (RL) ND SVHC RL)
- ND = (RL) ND SVHC
- (3) *
- **

ICP-OES

ICP-OES

- RL = 0.005% ((VI))
- RL = 0.0005% RL=0.0025% () RL=0.050%
- (4) § (CAS No.: 90-94-8) (CAS No.: 101-61-1)
- SVHC

- (5)
- (6) /
- (7) / = SVHC

1501 3 101 A. 198 ; B.
 ILAC-G8:09/2019 w=0



(SVHC)

CANEC24022805502

2024 10 23

6

14



CANEC24022805502

2024 10 23

7 14

(SVHC)

| | | | CAS No. | RL (%) |
|--|--|--|---------|--------|
|--|--|--|---------|--------|

(SVHC)

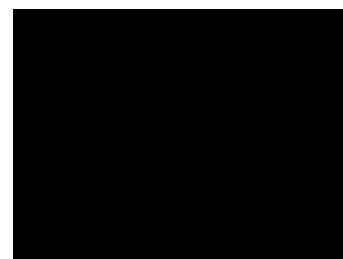
| | | | CAS No. | RL (%) |
|------|-----|---|-------------|--------|
| VII | 79 | | 75-12-7 | 0.050 |
| VII | 80 | * | 17570-76-2 | 0.005 |
| VII | 81 | N,N,N',N'- 4,4'- () | 101-61-1 | 0.050 |
| VII | 82 | 1,3,5- ()-1,3,5- 2,4,6-(1H, 3H,5H)- (TGIC) | 2451-62-9 | 0.050 |
| VII | 83 | C.I. 4§ | 6786-83-0 | 0.050 |
| VII | 84 | 1,3,5- -[(2S 2R)-2,3-]-1,3,5- - 2,4,6-(1H, 3H, 5H)- -TGIC) | 59653-74-6 | 0.050 |
| VIII | 85 | * | 69011-06-9 | 0.005 |
| VIII | 86 | 1,2- - () | 84777-06-0 | 0.050 |
| VIII | 87 | | 629-14-1 | 0.050 |
| VIII | 88 | 1- | 106-94-5 | 0.050 |
| VIII | 89 | 3- -2- -2-(3-)-1,3- | 143860-04-2 | 0.050 |
| VIII | 90 | | - | 0.050 |
| VIII | 91 | 4,4'- -3,3'- | 838-88-0 | 0.050 |
| VIII | 92 | 4,4'- | 101-80-4 | 0.050 |
| VIII | 93 | 4- | 60-09-3 | 0.050 |
| VIII | 94 | 2,4- | 95-80-7 | 0.050 |
| VIII | 95 | 4- () | - | 0.050 |
| VIII | 96 | 2- -5- | 120-71-8 | 0.050 |
| VIII | 97 | * | 51404-69-4 | 0.005 |
| VIII | 98 | 4- | 92-67-1 | 0.050 |
| VIII | 99 | (DecaBDE) | 1163-19-5 | 0.050 |
| VIII | 100 | -1,2- , - -1,2- | - | 0.050 |
| VIII | 101 | | 123-77-3 | 0.050 |
| VIII | 102 | (DBTC) | 683-18-1 | 0.050 |
| VIII | 103 | | 64-67-5 | 0.050 |
| VIII | 104 | | 605-50-5 | 0.050 |
| VIII | 105 | | 77-78-1 | 0.050 |
| VIII | 106 | | 88-85-7 | 0.050 |
| VIII | 107 | () * | 12578-12-0 | 0.005 |
| VIII | 108 | C16-18- * | 91031-62-8 | 0.005 |
| VIII | 109 | | 110-00-9 | 0.050 |
| VIII | 110 | | 2058-94-8 | 0.050 |
| VIII | 111 | | 376-06-7 | 0.050 |
| VIII | 112 | , 1- ,4- ,3- | - | 0.050 |
| VIII | 113 | * | 13814-96-5 | 0.005 |
| VIII | 114 | * | 20837-86-9 | 0.005 |
| VIII | 115 | * | 10099-74-8 | 0.005 |

(SVHC)

| | | | CAS No. | RL (%) |
|------|-----|----------------------------|-------------|--------|
| VIII | 116 | * | 1317-36-8 | 0.005 |
| VIII | 117 | * | 12036-76-9 | 0.005 |
| VIII | 118 | * | 1314-41-6 | 0.005 |
| VIII | 119 | * | 12060-00-3 | 0.005 |
| VIII | 120 | * | 12626-81-2 | 0.005 |
| VIII | 121 | | 625-45-6 | 0.050 |
| VIII | 122 | 1,2- | 75-56-9 | 0.050 |
| VIII | 123 | N,N- | 68-12-2 | 0.050 |
| VIII | 124 | N- | 79-16-3 | 0.050 |
| VIII | 125 | | 776297-69-9 | 0.050 |
| VIII | 126 | - | 97-56-3 | 0.050 |
| VIII | 127 | 2- | 95-53-4 | 0.050 |
| VIII | 128 | | 72629-94-8 | 0.050 |
| VIII | 129 | * | 12065-90-6 | 0.005 |
| VIII | 130 | * | 8012-00-8 | 0.005 |
| VIII | 131 | * | 68784-75-8 | 0.005 |
| VIII | 132 | * | 11120-22-2 | 0.005 |
| VIII | 133 | * | 62229-08-7 | 0.005 |
| VIII | 134 | * | 78-00-2 | 0.005 |
| VIII | 135 | * | 12202-17-4 | 0.005 |
| VIII | 136 | | 307-55-1 | 0.050 |
| VIII | 137 | * | 1319-46-6 | 0.005 |
| VIII | 138 | * | 12141-20-7 | 0.005 |
| IX | 139 | 4- () | - | 0.050 |
| IX | 140 | (APFO)** | 3825-26-1 | 0.050 |
| IX | 141 | * | 1306-19-0 | 0.005 |
| IX | 142 | | 7440-43-9 | 0.005 |
| IX | 143 | (DPP) | 131-18-0 | 0.050 |
| IX | 144 | (PFOA) | 335-67-1 | 0.050 |
| X | 145 | * | 1306-23-6 | 0.005 |
| X | 146 | | 84-75-3 | 0.050 |
| X | 147 | C.I. 28 | 573-58-0 | 0.050 |
| X | 148 | C.I. 38 | 1937-37-7 | 0.050 |
| X | 149 | 2- | 96-45-7 | 0.050 |
| X | 150 | * | 301-04-2 | 0.005 |
| X | 151 | | 25155-23-1 | 0.050 |
| XI | 152 | () | 68515-50-4 | 0.050 |
| XI | 153 | * | 10108-64-2 | 0.005 |
| XI | 154 | * | - | 0.005 |
| XI | 155 | * | 7632-04-4 | 0.005 |
| XII | 156 | 2-(2H- -2-)-4,6- (UV-328) | 25973-55-1 | 0.050 |

(SVHC)

| | | | CAS No. | RL (%) |
|------|-----|--|------------------------|--------|
| XII | 157 | 2- -2- -4,6- (UV-320) | 3846-71-7 | 0.050 |
| XII | 158 | - (2-) (DOTE) | 15571-58-1 | 0.050 |
| XII | 159 | * | 7790-79-6 | 0.005 |
| XII | 160 | * | 10124-36-4 /31119-53-6 | 0.005 |
| XII | 161 | - (2-) (DOTE) - (2-) (MOTE) | - | 0.050 |
| XIII | 162 | 1,2- , (C6-10) / 1,2- , , | - | 0.050 |
| XIII | 163 | 5- -2-(2,4- -3- -1-)-5- -1,3- [1] 5- -2-(4,6- -3- -1-)-5- -1,3- [2] [[1] [2]] | - | 0.050 |
| XIV | 164 | 1,3- | 1120-71-4 | 0.050 |
| XIV | 165 | | 3864-99-1 | 0.050 |
| XIV | 166 | 2-(2H- -2-)-4-()-6-() (UV-350) | 36437-37-3 | 0.050 |
| XIV | 167 | | 98-95-3 | 0.050 |
| XIV | 168 | | - | 0.050 |
| XV | 169 | (a) | 50-32-8 | 0.050 |
| XVI | 170 | 4,4'- (A) | 80-05-7 | 0.050 |



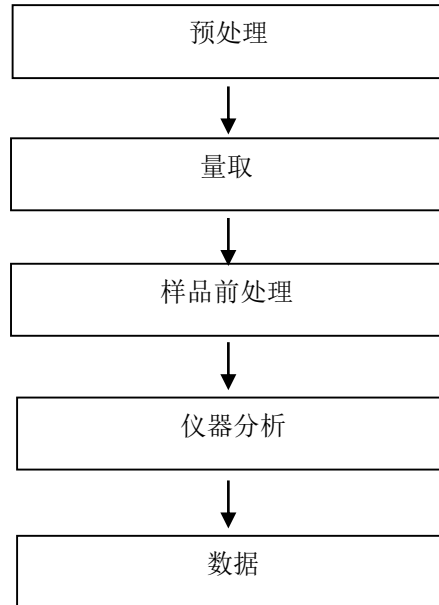
(SVHC)

| | | | CAS No. | RL (%) |
|-----|-----|------------------------------------|------------|--------|
| XIX | 187 | (D6) | 540-97-6 | 0.050 |
| XIX | 188 | (EDA) | 107-15-3 | 0.050 |
| XIX | 189 | | 7439-92-1 | 0.005 |
| XIX | 190 | (D4) | 556-67-2 | 0.050 |
| XIX | 191 | | 61788-32-7 | 0.050 |
| XX | 192 | 1,7,7- -3-() [2.2.1] -2- (3-) | 15087-24-8 | 0.050 |
| XX | 193 | 4,4'-(1,3-) (1,3-DMBBP) | 6807-17-6 | 0.050 |
| XX | 194 | (k) (BkF) | 207-08-9 | 0.050 |
| XX | 195 | (FLT) | 206-44-0 | 0.050 |
| XX | 196 | (PHE) | 85-01-8 | 0.050 |
| XX | 197 | (PYR) | 129-00-0 | 0.050 |
| XXI | 198 | 2,3,3,3- -2-() () (HFPO-DA) | - | 0.050 |
| XXI | 199 | 2- | 110-49-6 | 0.050 |

(SVHC)

| | | | CAS No. | RL (%) |
|--------|-----|---|-------------|--------|
| XXVI | 222 | S-([5.2.1.0'2,6] -3- -8(9)-) O-(2-) O-(2-) | 255881-94-8 | 0.050 |
| XXVI | 223 | - (2-) | 1067-53-4 | 0.050 |
| XXVII | 224 | N- | 924-42-5 | 0.050 |
| XXVIII | 225 | 1,2- (2,4,6-) | 37853-59-1 | 0.050 |
| XXVIII | 226 | A | 79-94-7 | 0.050 |
| XXVIII | 227 | S | 80-09-1 | 0.050 |
| XXVIII | 228 | * | 13701-59-2 | 0.005 |
| XXVIII | 229 | (2-) | - | 0.050 |
| XXVIII | 230 | | 4247-02-3 | 0.050 |
| XXVIII | 231 | | 108-78-1 | 0.050 |
| XXVIII | 232 | | - | 0.050 |
| XXVIII | 233 | * | - | 0.050 |
| XXIX | 234 | (4-) | 80-07-9 | 0.050 |
| XXIX | 235 | (2,4,6-) | 75980-60-8 | 0.050 |
| XXX | 236 | 2,4,6- | 732-26-3 | 0.050 |
| XXX | 237 | <u>2-(2'-5' -5'-)</u> (UV-329) | 3147-75-9 | 0.050 |

(SVHC)





(SVHC)

CANEC24022805502

2024 10 23

14

14