

(SVHC)

CANEC24022812802

2024 10 23

1

14

李嘉欣

Jessie-JX Li

scan to see the report



3321DD5D

(SVHC)

REACH 14 SVHC	
------------------	--



(SVHC)

1.

<http://echa.europa.eu/web/guest/candidate-list-table>

2. REACH

2.1

1907/2006 EC	33	57	59
0.1%			

59	1907/2006 EC	7	57
----	--------------	---	----



(SVHC)

SVHC

		CAS No.	001 (%)	RL (%)
-	SVHC	-	ND	-

SVHC

		CAS No.	001 (%)	RL (%)
/	SVHC	-	ND	-

SVHC

		CAS No.	002 (%)	RL (%)
XIX		7439-92-1	0.023	0.005
-	SVHC	-	ND	-

SVHC

		CAS No.	002 (%)	RL (%)
/	SVHC	-	ND	-

- (1) SVHC RL SVHC SVHC
- (2) RL = ((RL) ND SVHC RL)
- ND = ((RL) ND SVHC)
- (3) *
- **

ICP-OES

ICP-OES

- RL = 0.005% ((VI))
- RL = 0.0005% RL=0.0025%() RL=0.050%
- (4) § (CAS No.: 90-94-8) (CAS No.: 101-61-1)
- SVHC

- (5)
- (6) /
- (7) / = SVHC

1501 3 101 A. 198 ; B.
 ILAC-G8:09/2019 w=0

(SVHC)

SVHC:

			CAS No.	RL (%)
I	1	4,4'- (MDA)	101-77-9	0.050
I	2	2,4,6- -5- ()	81-15-2	0.050
I	3	C10-13 ()	85535-84-8	0.050
I	4		120-12-7	0.050
I	5	(BBP)	85-68-7	0.050
I	6	(2-) (DEHP)	117-81-7	0.050
I	7	(TBTO)	56-35-9	0.050
I	8	*	7646-79-9	0.005
I	9	*	1303-28-2	0.005
I	10	*	1327-53-3	0.005
I	11	(DBP)	84-74-2	0.050
I	12	(HBCDD) - -HBCDD)	-	0.050
I	13	*	7784-40-9	0.005
I	14	*	10588-01-9 /7789-12-0	0.005
I	15	*	15606-95-8	0.005
II	16	2,4-	121-14-2	0.050
II	17	**	90640-80-5	0.050
II	18	**	90640-81-6	0.050
II	19	**	91995-15-2	0.050
II	20	**	91995-17-4	0.050
II	21	**	90640-82-7	0.050
II	22		84-69-5	0.050
II	23	*	7758-97-6	0.005
II	24	(C.I. 104)*	12656-85-8	0.005
II	25	(C.I. 34)*	1344-37-2	0.005
II	26	**	65996-93-2	0.050
II	27	(2-)	115-96-8	0.050
II	28		79-06-1	0.050
III	29	*	7789-09-5	0.005
III	30	*	-	0.005
III	31	*	12179-04-3 /1303-96-4 /1330-43-4	0.005
III	32	*	7789-00-6	0.005
III	33	*	7778-50-9	0.005
III	34	*	7775-11-3	0.005
III	35	*	12267-73-1	0.005
III	36		79-01-6	0.050
IV	37		110-80-5	0.050



(SVHC)

			CAS No.	RL (%)
IV	38		109-86-4	0.050
IV	39	, , *	-	0.005
IV	40	*	1333-82-0	0.005
IV	41	*	513-79-1	0.005
IV	42	*	71-48-7	0.005
IV	43	*	10141-05-6	0.005
IV	44	*	10124-43-3	0.005
V	45	1,2,3-	96-18-4	0.050
V	46	1,2- - (C6-8) (C7)	71888-89-6	0.050
V	47	1,2- - (C7-11) ()	68515-42-4	0.050
V	48	1- -2-	872-50-4	0.050
V	49		111-15-9	0.050
V	50		302-01-2 /7803-57-8	0.050
V	51	*	7789-06-2	0.005
VI	52	1,2-	107-06-2	0.050
VI	53	4,4'- -3,3'-	101-14-4	0.050
VI	54	2-	90-04-0	0.050
VI	55		140-66-9	0.050
VI	56	*	-	0.005
VI	57	*	7778-39-4	0.005
VI	58		111-96-6	0.050
VI	59		117-82-8	0.050
VI	60	*	7778-44-1	0.005
VI	61	*	24613-89-6	0.005
VI	62		25214-70-4	0.050
VI	63	*	13424-46-9	0.005
VI	64	*	6477-64-1	0.005
VI	65	*	15245-44-0	0.005
VI	66	N,N-	127-19-5	0.050
VI	67	*	49663-84-5	0.005
VI	68		77-09-8	0.050
VI	69	*	11103-86-9	0.005
VI	70	*	3687-31-8	0.005
VI	71	*	-	0.005
VII	72	C.I. 26§	2580-56-5	0.050
VII	73	C.I. 3§	548-62-9	0.050
VII	74	(TEGDME)	112-49-2	0.050
VII	75	(EGDME)	110-71-4	0.050
VII	76	4,4'- () ()	90-94-8	0.050
VII	77	- ()- - §	561-41-1	0.050
VII	78	*	1303-86-2	0.005



(SVHC)

			CAS No.	RL (%)
VII	79		75-12-7	0.050
VII	80		17570-76-2	0.005
VII	81	N,N,N',N'-	-	



(SVHC)

			CAS No.	RL (%)
VIII	116	*	1317-36-8	0.005
VIII	117	*	12036-76-9	0.005
VIII	118	*	1314-41-6	0.005
VIII	119	*	12060-00-3	0.005
VIII	120	*	12626-81-2	0.005
VIII	121		625-45-6	0.050
VIII	122	1,2-	75-56-9	0.050
VIII	123	N,N-	68-12-2	0.050
VIII	124	N-	79-16-3	0.050
VIII	125		776297-69-9	0.050
VIII	126	-	97-56-3	0.050
VIII	127	2-	95-53-4	0.050
VIII	128		72629-94-8	0.050
VIII	129	*	12065-90-6	0.005
VIII	130	*	8012-00-8	0.005
VIII	131	*	68784-75-8	0.005
VIII	132	*	11120-22-2	0.005
VIII	133	*	62229-08-7	0.005
VIII	134	*	78-00-2	0.005
VIII	135	*	12202-17-4	0.005
VIII	136		307-55-1	0.050
VIII	137	*	1319-46-6	0.005
VIII	138	*	12141-20-7	0.005
IX	139	4- ()	-	0.050
IX	140	(APFO)**	3825-26-1	0.050
IX	141	*	1306-19-0	0.005
IX	142		7440-43-9	0.005
IX	143	(DPP)	131-18-0	0.050
IX	144	(PFOA)	335-67-1	0.050
X	145	*	1306-23-6	0.005
X	146		84-75-3	0.050
X	147	C.I. 28	573-58-0	0.050
X	148	C.I. 38	1937-37-7	0.050
X	149	2-	96-45-7	0.050
X	150	*	301-04-2	0.005
X	151		25155-23-1	0.050
XI	152	()	68515-50-4	0.050
XI	153	*	10108-64-2	0.005
XI	154	*	-	0.005
XI	155	*	7632-04-4	0.005
XII	156	2-(2H- -2-)-4,6- (UV- 328)	25973-55-1	0.050

(SVHC)

			CAS No.	RL (%)
XII	157	2- -2- -4,6- (UV-320)	3846-71-7	0.050
XII	158	- (2-) (DOTE)	15571-58-1	0.050
XII	159	*	7790-79-6	0.005
XII	160	*	10124-36-4 /31119-53-6	0.005

XII



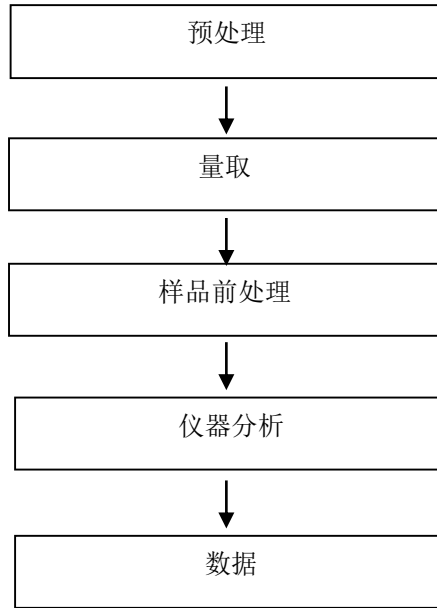
(SVHC)

			CAS No.	RL (%)
XIX	187	(D6)	540-97-6	0.050
XIX	188	(EDA)	107-15-3	0.050
XIX	189		7439-92-1	0.005
XIX	190	(D4)	556-67-2	0.050
XIX	191		61788-32-7	0.050
XX	192	1,7,7- -3-() [2.2.1] -2- (3-)	15087-24-8	0.050
XX	193	4,4'-(1,3-) (1,3-DMBBP)	6807-17-6	0.050
XX	194	(k) (BkF)	207-08-9	0.050
XX	195	(FLT)	206-44-0	0.050
XX	196	(PHE)	85-01-8	0.050
XX	197	(PYR)	129-00-0	0.050
XXI	198	2,3,3,3- -2-() () (HFPO-DA)	-	0.050
XXI	199	2-	110-49-6	0.050
XXI	200	4- (PTBP)	98-54-4	0.050
XXI	201	(4-) (TNPP)(4-)	-	0.050
XXII	202	2- -2- -4'-	119313-12-1	0.050
XXII	203	2- -1-(4-)-2- -1-	71868-10-5	0.050
XXII	204		71850-09-4	0.050
XXII	205		-	0.050
XXIII	206	1-	1072-63-5	0.050
XXIII	207	2-	693-98-1	0.050
XXIII	208		94-26-8	0.050
XXIII	209	() **	22673-19-4	0.050
XXIV	210		143-24-8	0.050
XXIV	211	() **	-	0.050
XXV	212	1,4-	123-91-1	0.050
XXV	213	(BMP); (TBNPA); 2,3- -1- (2,3-DBPA)	-	0.050
XXV	214		-	0.050
XXV	215	B	77-40-7	0.050
XXV	216		111-30-8	0.050
XXV	217	(MCCP)	-	0.050
XXV	218	*	13840-56-7	0.005
XXV	219	(PDDP)	-	0.050
XXVI	220	(±)-1,7,7- -3-[(4-)] [2.2.1] -2- / (4- MBC)	-	0.050
XXVI	221	2,2'- -(4- -6-) (DBMC)	119-47-1	0.050

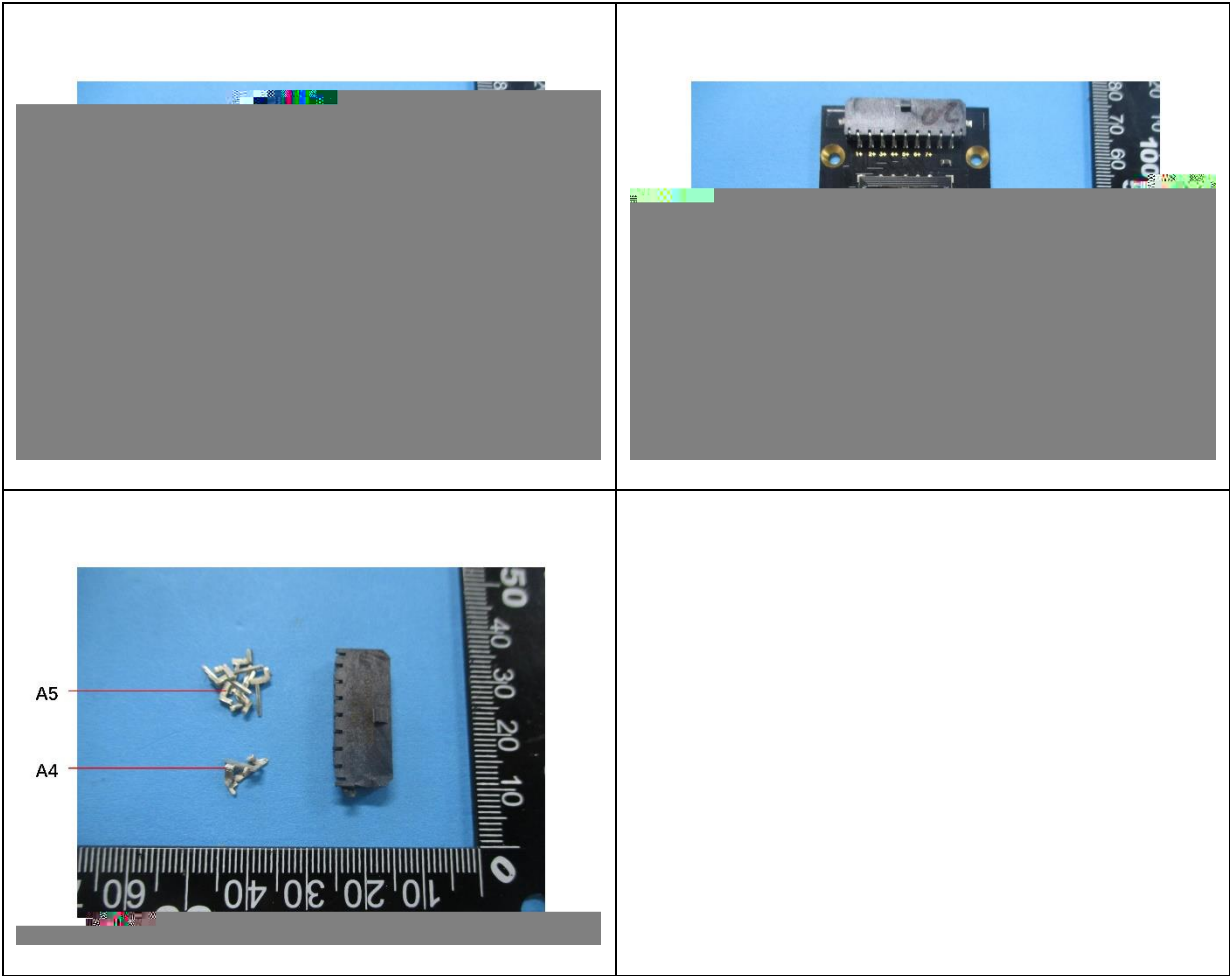
(SVHC)

			CAS No.	RL (%)
XXVI	222	S-([5.2.1.0'2,6] -3- -8(9)-) O-(2-) O-(2-)	255881-94-8	0.050
XXVI	223	- (2-)	1067-53-4	0.050
XXVII	224	N-	924-42-5	0.050
XXVIII	225	1,2- (2,4,6-)	37853-59-1	0.050
XXVIII	226	A	79-94-7	0.050
XXVIII	227	S	80-09-1	0.050
XXVIII	228	*	13701-59-2	0.005
XXVIII	229	(2-)	-	0.050
XXVIII	230		4247-02-3	0.050
XXVIII	231		108-78-1	0.050
XXVIII	232		-	0.050
XXVIII	233	*	-	0.050
XXIX	234	(4-)	80-07-9	0.050
XXIX	235	(2,4,6-)	75980-60-8	0.050
XXX	236	2,4,6-	732-26-3	0.050
XXX	237	2-(2'- -5'-) (UV-329)	3147-75-9	0.050
XXX	238	2-(4-)-2-()-1-(4-)- 1- (PI-379)	119344-86-4	0.050
XXX	239	(UV-326)	3896-11-5	0.050
XXX	240	2-	-	0.050
XXXI	241		80-43-3	0.050
/	242	6-[(C10-C13)- -(,)-2,5- -1-]	2156592-54-8	0.050

(SVHC)



(SVHC)



SGS
